



NETCOM

Installations maintenance and remotes management.
All the functions you need in just one device. From your office.



Remote management

NETCOM is a multi-faceted tool that adapts to different kinds of usage.



Set scheduled maintenance operations
(Feature: "Maintenance calendar")



Define when a user can enter or exit
(Feature: "Time slots")



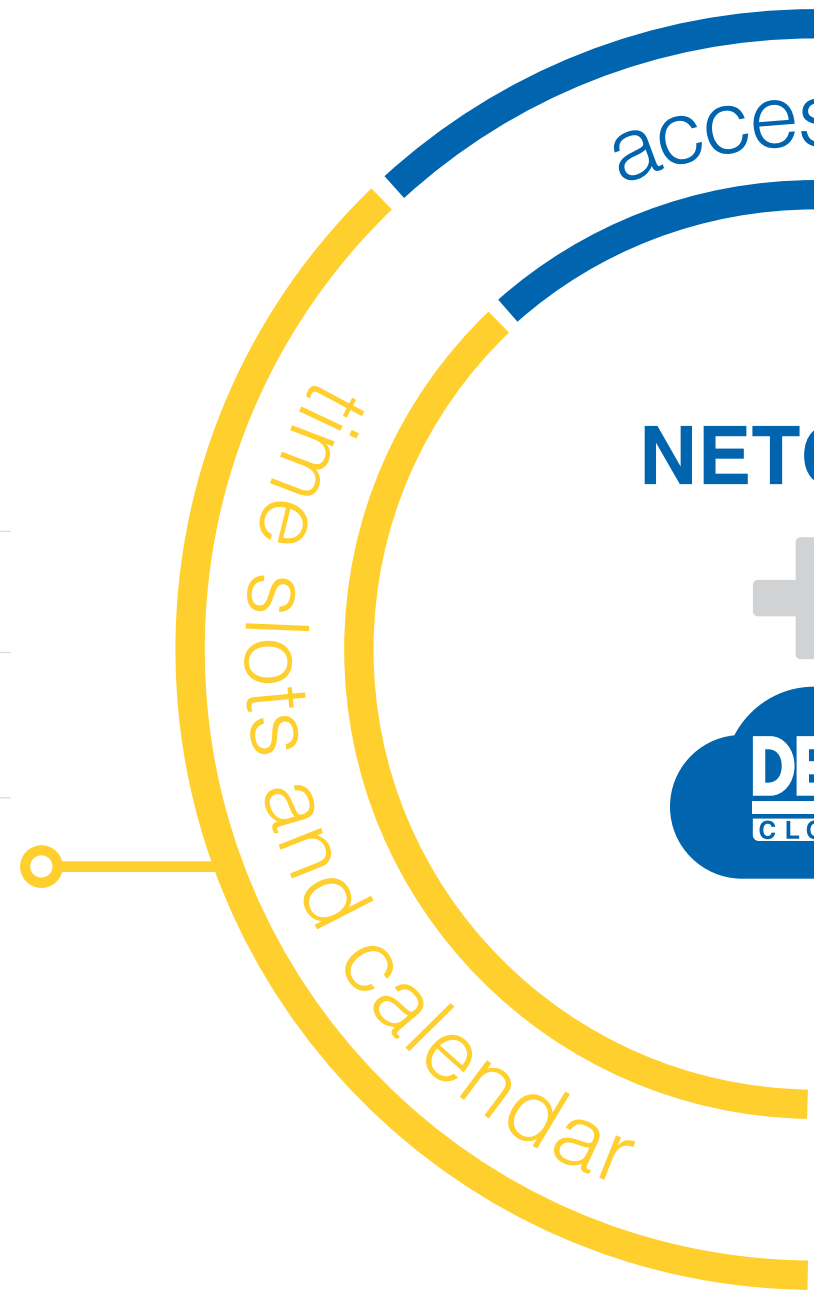
Set an automatic opening/closing of the gate
even with operators of other brands.
(Feature: "Timer" for automatic actions)



Choose your holidays: decide when automatic actions can be deactivated
(Feature: "Automatic actions calendar")

NETCOM is to be used with DEACloud: the [website](https://cloud.deasystem.com) that allows you to manage all your devices with NETLINK technology.

<https://cloud.deasystem.com>



Are you a **professional installer** or a **user**? Find

ss tools

COM



installations management



Remotes

- Manage
- Add
- Edit
- Delete



DEAuser app

- Enable and disable users
- Edit passwords



GSM call

- Enable and disable users
- Activate one or more devices on the sites with one call



Program NETLINK devices

- DE@NET control boards
- DEAuser app receivers



- Check for any fault on the site**
and act promptly in case of fault



- Check who went in or out**
(Feature: "Event Log")



- Check if any safety device has been activated**
(Feature: "Event Log")



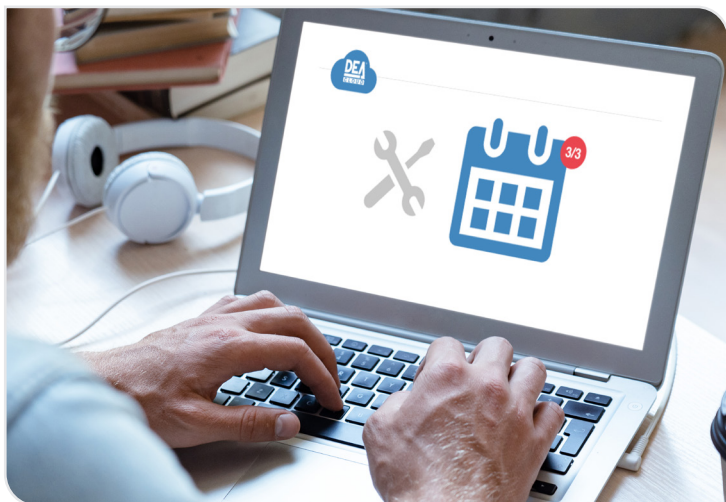
- Check the authorisations of the users**
Decide who can open the gate and which automations the user can control

out how to use NETCOM in the following pages!



Are you a
professional installer?

These are the NETCOM's features
designed for you



Looking for a way to always remember all the maintenance operations?

It's really easy with the feature "Maintenance"

1. Access to the "Maintenance" section in DEAlink
2. Set a notification
3. You'll see a notification when a maintenance operation is required



Want to manage all the installations from your office?

No worries!

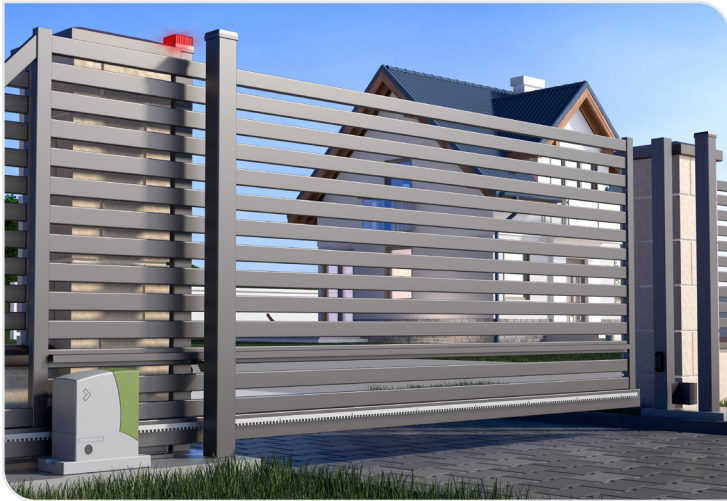
You can:

1. Program the control board or the NETLINK* receiver connected to NETCOM
2. Check if the devices in the installations function correctly
3. Check who went in or out
4. Check if any safety device has been activated (e.g. safety edges)
5. Manage all the devices for opening the gate: remotes, DEAlink** app, GSM calls

* NETLINK is the DEA technology for managing your systems remotely and locally.

** DEAlink app is compatible only with NETCOM and M2M SIM (machine-to-machine) by other operators





Want to exploit all NETCOM features on an installation by other brands?

Quick and easy!

1. Connect NETCOM to a non-DEA automation
2. Access to all DEACloud features

✓ You can:

1. program maintenance operations
2. add, delete, edit remotes
3. control the automation
4. set the automatic opening and closing of the gate
5. define users' authorisations ("Profiles" feature)
6. check who went in or out

✗ You cannot:

1. edit the parameters of the control boards and receivers
2. check for any errors in the control boards



Want to set up 1500 remotes?

You can do it in few minutes

DEA remotes are serialised in sequence in 100-piece boxes.

1. Connect to DEACloud
2. Enter the serial number of the first remote control
3. Enter the total quantity of remotes that you need to program
4. Synchronise
5. Remotes will work immediately



Is your customer asking you for a **new remote**?

You can create one in few seconds

1. Open DEACloud and connect to NETCOM
2. Enter the serial number of the remote
3. Deliver the remote to your customer, it will work immediately



Does your customer often need to change the **owner** of a remote?

You can do it with the account "Manager"

This account is dedicated to the person who is in charge of administrating the installation.

✔ **The Manager can:**

1. add, edit and delete remotes, DEAuser app and phone numbers
2. edit access authorisations
3. edit access time slots

✘ **The Manager cannot:**

1. edit the parameters of the control boards and receivers





Are you a site
manager or a user?

These are NETCOM's features
designed for you



Do you need to manage **different levels of authorisations** to access a building?

You can do it with the feature "Profiles"

The "Profiles" feature allows you to define who can open the gate, at what time and what other devices can be controlled by him/her.

With DEACloud each remote can have a different profile.

For example, the cleaning staff can be given a specific profile, different from other employees.

The cleaning staff will be allowed to open only the main gate and the entrance door from 5am to 7am in the morning, while the employees will be allowed to open the main gate and the entrance door from 8.30am to 8.45am.



Do you want the people living in your apartment blocks to access the building **without keys**?

They can open the gate with a GSM phone call

With NETCOM plus SIM you can enable up to 200 phone numbers simultaneously and set access days and time slots. You can also disable them at any time.





Do you need to open and close the gate **every day** at the **same time**?

Use the feature "Timer" automatic actions

With NETCOM you can activate the timer function and set automatic actions using time slots.

Do you own a hotel or a company? You can set the automatic opening of the entrance gate in the morning and closing in the evening.

You can disable such automatic commands in specific days of the year by setting your personal calendar.



Do you want to do **more** besides opening and closing the gate?

NETCOM has two programmable outputs

You can connect NETCOM to other devices to control any feature you need, remotely, easily and quickly.

For example, NETCOM can activate the lighting system on your entrance driveway.



Did your son forget his house key?

Open the gate from your office with DEAuser app or a GSM call.

With the DEAuser app you can check remotely if the gate is open or closed.



NETCOM is a **plug-and-play** tool, which is immediately ready to use.

It can be used with SIM or LAN connection* and is available in **two versions** with different features:

*Q4 2020

art.NETCOM/S

code 679115

Supplied with DEA SIM card

art.NETCOM

code 679117

Supplied without SIM card



Accessories



art.NETCOM POWER
SUPPLY
code 163523

Supply device for
NETCOM (840mA / 24V
DC)



art.S-EXTENDER
code 677650

Card to extend the
range of the connection
cable between
NETCOM and NETLINK
devices (DE@NET
control boards and
receivers) from 3m to a
maximum of 50m.



art.ANTENNA GSM LTE
code 179009

External GSM-LTE
antenna to increase the
modem signal.
Cable = 2 m

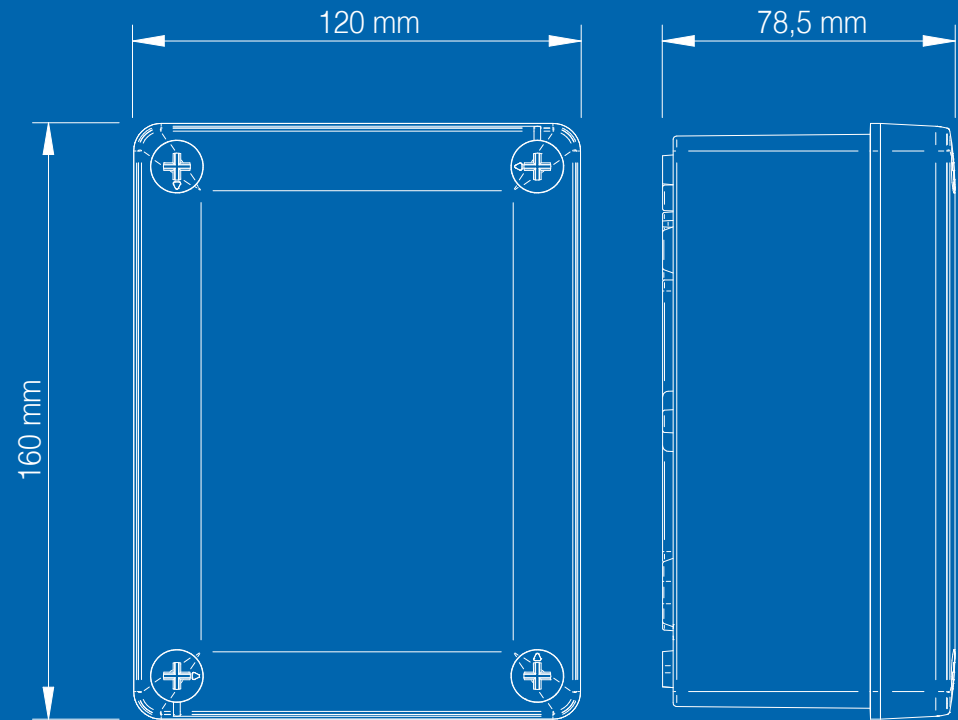


art. LAN - EXP
code 679118

Plug-in module to
connect the LAN cable
to NETCOM

Q4 2020

| characteristic | description |
|------------------------------|------------------------------------|
| NET devices can be connected | 1 |
| remotes that can be stored | 1500 |
| frequency | 433.92 MHz |
| compatible encoding types | Dip Switch, Rolling-Code, D.A.R.T. |
| programmable outputs | 2 Outputs 0.5A / 30 --- |
| programmable inputs | 2 Inputs |
| power supply | 12V~/--- ±5% 24V~/--- ±5% |
| max. power consumption | 10W |
| battery | CR 2032 |
| modem frequency 2G (MHz) | 850/900/1800/1900 |
| operating temperature | -10°C ÷ +50°C |
| protection grade | IP55 |



| | features | art. NETCOM/S | art. NETCOM | art. NETCOM |
|--|--|---|---|---|
| general | M2M SIM (machine to machine) | SIM card supplied by DEA with a 5-year plan | SIM by other operators , not supplied by DEA | without SIM |
| | programming with DEACloud through: | 2G/3G/4G SIM (remote connection) | SIM or LAN (remote connection) | USB (local connection) |
| | editing parameters remotely | ✓ | ✓ | ✗ |
| | enabling the "Manager" account | ✓ | ✓ | ✗ |
| access tools | access through a GSM call | ✓ | ✓ | ✗ |
| | access to all features of remote control management | ✓ | ✓ | ✓ only locally and only with Windows |
| | using DEAuser app | ✗ | ✓ with a SIM by other operators* or LAN | ✗ |
| installation management | programming NETLINK devices (DE@NET control boards, DEA receivers) | ✓ | ✓ | ✗ remotely |
| | | | | ✓ locally |
| | checking the status of the system | ✓ | ✓ | ✗ remotely |
| | | | | ✓ locally with USB or art. NET-NODE |
| | quick intervention in case of faults | ✓ | ✓ | ✗ remotely |
| | | | | ✓ locally |
| | access to all features of maintenance management | ✓ with DEACloud | ✓ with DEACloud | ✓ with DEACloud |
| define which automations that can be controlled by the user <i>(Feature "Profiles")</i> | ✓ | ✓ | ✓ | |

| | features | art. NETCOM/S | art. NETCOM | art. NETCOM |
|-------------------------|---|---|---|-------------|
| | M2M SIM (machine to machine) | SIM card supplied by DEA with a 5-year plan | SIM by other operators , not supplied by DEA | without SIM |
| time slots and calendar | feature "Timer" for automatic actions | ✓ | ✓ | ✓ |
| | setting the time slots for the user access (Feature "Profiles") | ✓ | ✓ | ✓ |
| | feature "Calendar" to set up which days are to be considered add holidays | ✓ | ✓ | ✓ |

*Do you want to use a SIM card by **other operators** and the **DEAuser** app?

Use a machine-to-machine SIM with a minimum plan of 5 Mb/month.
 You will get an average of 10 DEAuser connections per day.
 Remember that data consumption may vary depending on network quality and frequency of connections.



#safeasyoulike!

Non-copyable remotes!

GTI remotes are **multi-function**. They have three coding possibilities: DIP SWITCH, Rolling Code and **D.A.R.T.** the new **DEA advanced coding**.

You can customize the **code** of the remotes to guarantee the **maximum security** to your customer.

D. DEA
A. Advanced
R. Rolling Code
T. Transmission

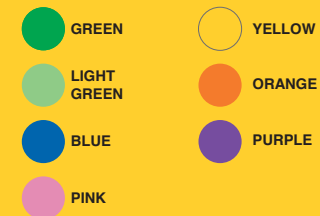
Looking for **total safety**?
With **NET-BOX** each installer can customize the code of your GTI remotes.



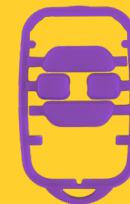
#colorasyoulike!

Choose your favorite color!

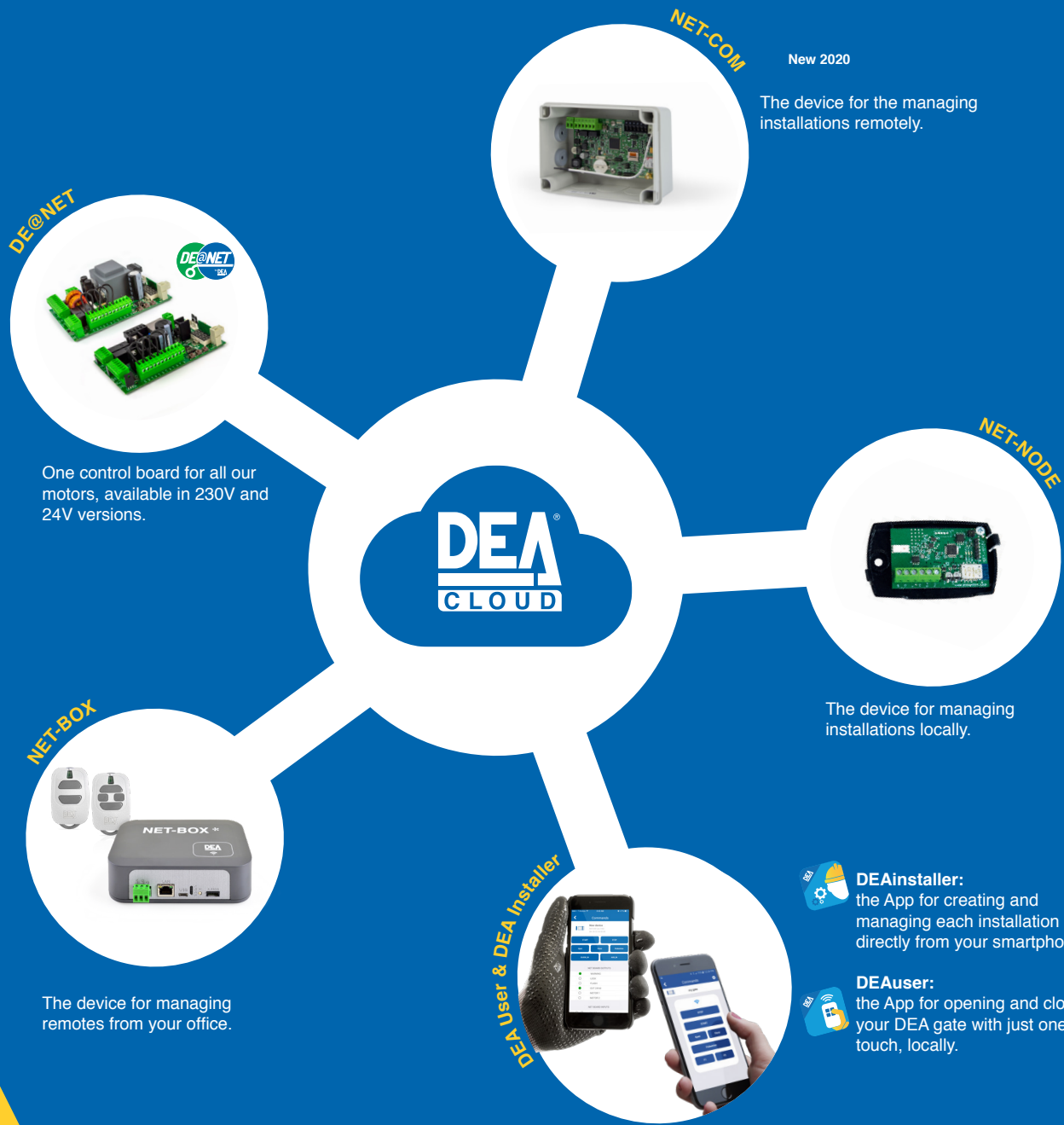
GTI remotes can be customized with **button kits** in seven colors: green, light green, blue, pink, yellow, orange and purple.



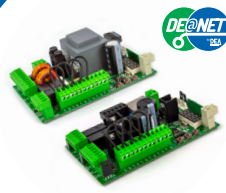
Note: button kits are supplied in packs of 5. The remote must be ordered separately.



is our technology applied to DEA devices for the smart management of your installations, both **locally** and **remotely**.



DE@NET



One control board for all our motors, available in 230V and 24V versions.

NET-COM



New 2020
The device for the managing installations remotely.

NET-NODE



The device for managing installations locally.

NET-BOX



The device for managing remotes from your office.

DEA User & DEA Installer



DEInstaller:
the App for creating and managing each installation directly from your smartphone.



DEUser:
the App for opening and closing your DEA gate with just one touch, locally.

Our range

Automations for sliding gates



Automations for sectional doors



Automations for swing gates



Barriers



Automations for industrial gates



Bollards



DEA[®]

move as you like

deasystem.com

DEA GATE AUTOMATION Ltd. - HEAD OFFICE

Sandholes Road - Cookstown - Co. Tyrone
BT80 9AR - NORTHERN IRELAND
☎ +44 (0)28 8676 6476 - 📠 +44 (0)28 8676 2414
info@deagateautomation.com - www.deasystem.co.uk

DEA GATE AUTOMATION Ltd.

Unit 31 - The IO Centre - Hearle Way - Hatfield - Hertfordshire
AL10 9EW - GREAT BRITAIN
☎ +44 (0)1707 246 599
info@deagateautomation.co.uk - www.deasystem.co.uk



**HEADQUARTER
DEA SYSTEM S.p.A.**

Via della Tecnica, 6 - 36013 Piovene Rocchette (VI) - ITALY
☎ + 39.0445.55.07.89 - 📠 + 39.0445.55.02.65
info@deasystem.com - www.deasystem.com

Branches > Italia.France.United Kingdom.Ireland.España.
Portugal.Polska.Deutschland.Беларусь

